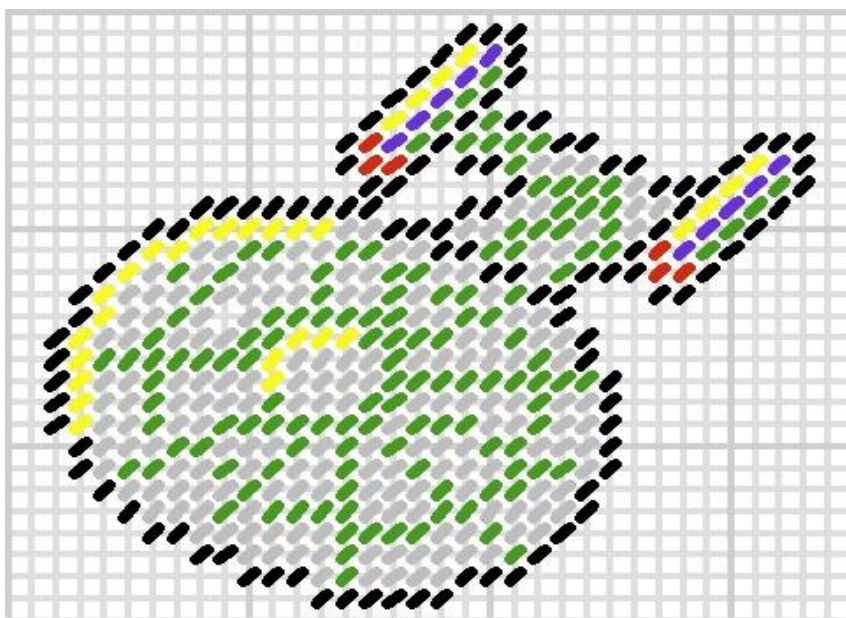
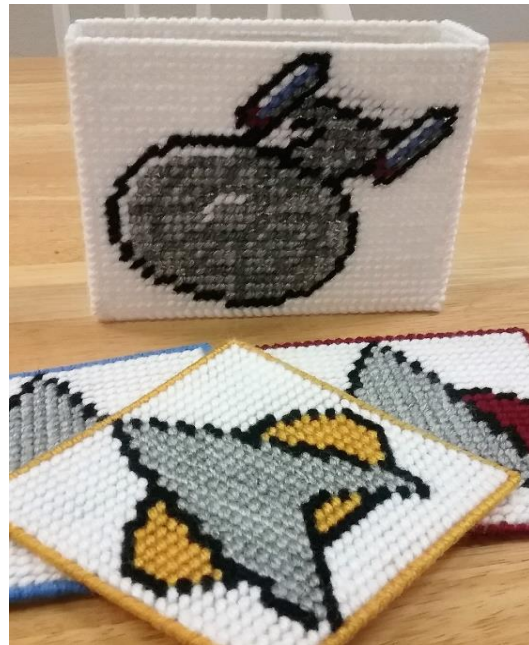


STAR TREK COASTER HOLDER

Cut front and back pieces 35 holes wide by 28 high.
Cut two side pieces 10 holes wide by 28 high. Cut
bottom piece 35 holes by 10. Bottom piece will
remain unstitched.

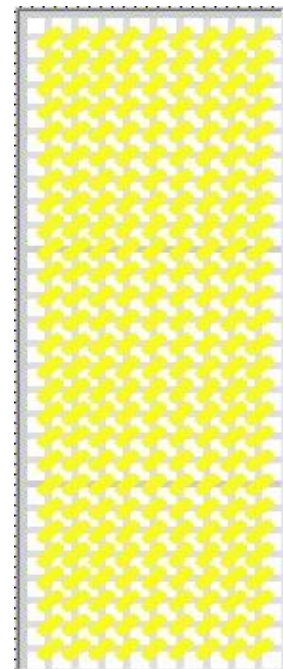


Cut and work two.
Fill unmarked areas with white.

Overcast top edges and attach pieces
using white.

Finished coaster holder will hold up to 6 Star Trek coasters.

The Puzzling Crafter



Cut and work two